



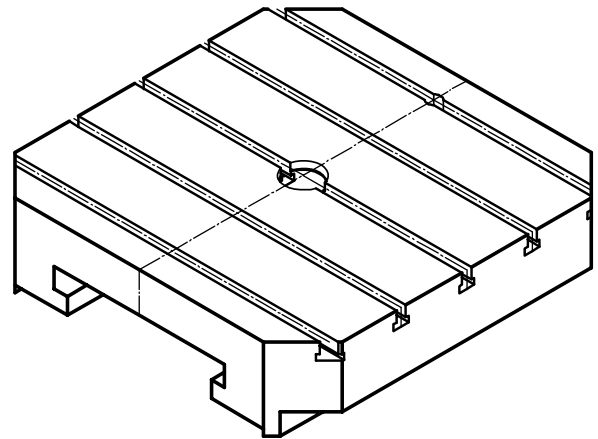
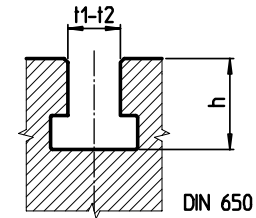
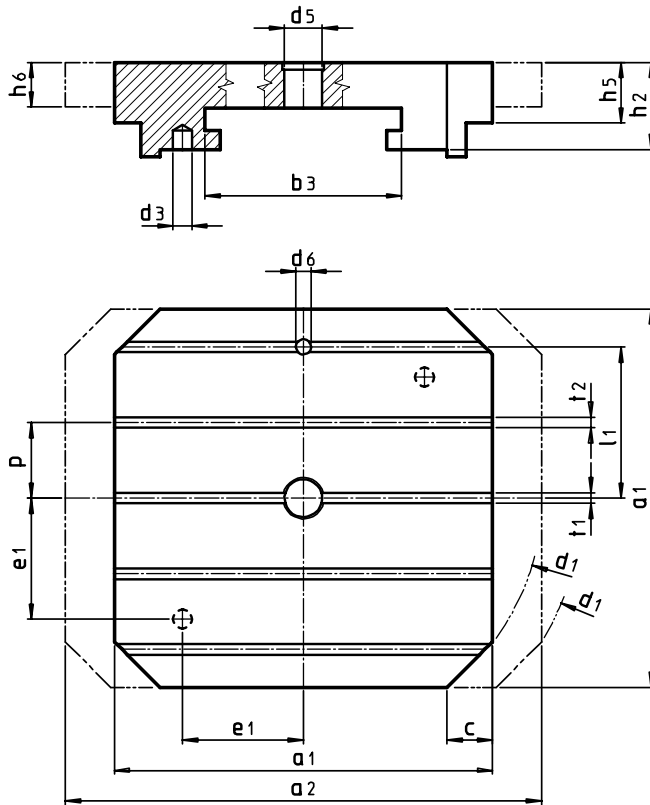
pallets quadrangolari, con scanalature parallele

pallets with t-slots
palettes avec rainures

Maschinen-Paletten mit T-Nuten

DIN 55201-A2

02



| codice-code | a1 | a2 | c | d1 | b3 | h2 | d3 | e1 | d5 | d6 | l1 | t1 | t2 | p | nr. | nr. | .GG |
|----------------|--------|--------|-----|--------|-----|-------|----|-----|----|----|-----|----|-----|------|-----|-----|-----|
| code-Best.Nr. | 0/-0.5 | 0/-0.5 | ~ | 0/-5.0 | | ±0.02 | | | H6 | H6 | | H8 | H12 | ±0.1 | t1 | t2 | kg |
| 020.010 | 320 | 320 | 40 | 400 | 200 | 90 | 25 | 120 | 50 | 20 | 100 | 12 | 12 | 50 | 1 | 4 | 45 |
| 020.030 | 400 | 400 | 50 | 500 | 200 | 105 | 25 | 125 | 50 | 20 | 150 | 14 | 14 | 50 | 1 | 6 | 85 |
| 020.050 | 500 | 500 | 60 | 630 | 260 | 115 | 25 | 160 | 50 | 20 | 200 | 14 | 14 | 100 | 1 | 4 | 150 |
| 020.070 | 630 | 630 | 70 | 800 | 340 | 140 | 30 | 200 | 50 | 25 | 200 | 18 | 18 | 100 | 1 | 4 | 275 |
| 020.090 | 800 | 800 | 100 | 1000 | 420 | 160 | 35 | 250 | 50 | 25 | 300 | 18 | 18 | 100 | 1 | 6 | 560 |
| 020.020 | 320 | 400 | 40 | 467 | 200 | 90 | 25 | 120 | 50 | 20 | 100 | 12 | 12 | 50 | 1 | 4 | 58 |
| 020.040 | 400 | 500 | 50 | 583 | 200 | 105 | 25 | 125 | 50 | 20 | 150 | 14 | 14 | 50 | 1 | 6 | 106 |
| 020.060 | 500 | 630 | 60 | 736 | 260 | 115 | 25 | 160 | 50 | 20 | 200 | 14 | 14 | 100 | 1 | 4 | 190 |
| 020.080 | 630 | 800 | 70 | 938 | 340 | 140 | 30 | 200 | 50 | 25 | 200 | 18 | 18 | 100 | 1 | 4 | 355 |
| 020.100 | 800 | 1000 | 100 | 1166 | 420 | 160 | 35 | 250 | 50 | 25 | 300 | 18 | 18 | 100 | 1 | 6 | 704 |

dimensioni maggiori a richiesta – bigger sizes available on request – dimensions majeurs sur demande – grössere Dimensionen auf Anfrage